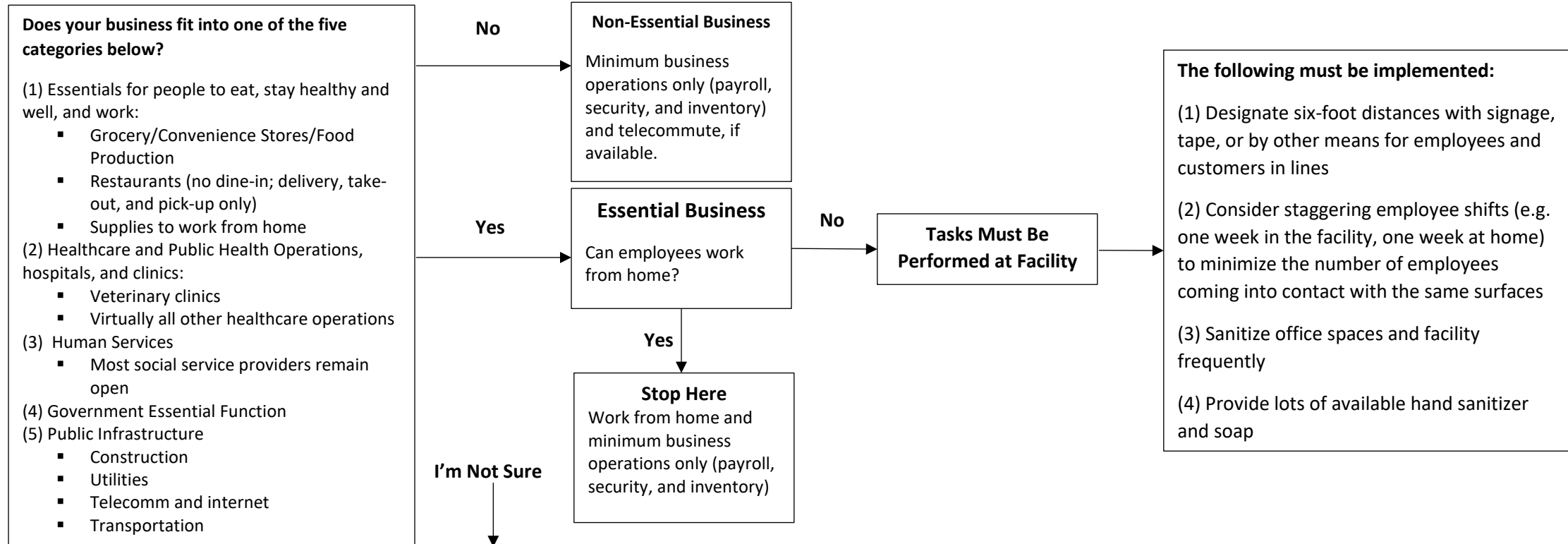




**Start Here**



**Factors to consider:**

- Can employees work from home?
  - If yes, stay open but have your employees work from home
- Does your company make or provide a product that is necessary for health care? Example: involved in any part of supplying a part or component of a medical supply such as the powder that coats medical gloves
  - If yes, your company is an essential business
- Is your company involved in any part of the food supply chain?
  - If yes, your company is an essential business
- Is the purpose of your company entertainment or leisure?
  - If yes, your company is not an essential business
- Is your company part of the supply chain for critical infrastructure?
  - If yes, the answer depends on how directly you supply a company or local government that maintains or builds critical infrastructure such as roads, rail, airports, or energy production or transmission facilities.